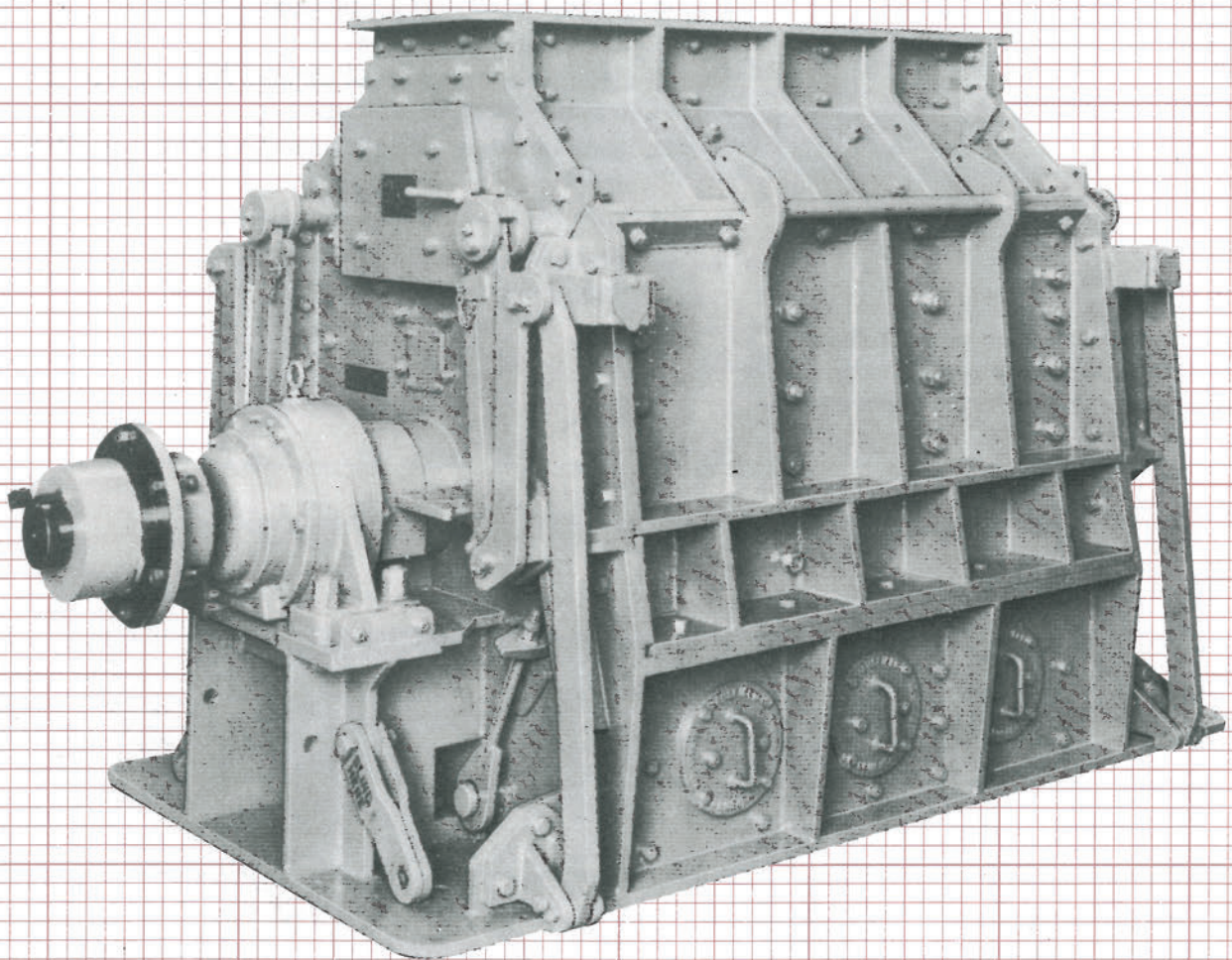


No.5 Centre Feed



MANSFIELD HAMMER CRUSHERS

MANSFIELD No.5 CFXL REVERSIBLE HAMMER CRUSHER

DESIGNED FOR SECONDARY AND TERTIARY DUTIES HANDLING A FEED OF UP TO 175 mm CUBICAL MATERIAL.

Power requirements. Dependant upon feed material and crusher setting; typically between 150 kW and 300 kW. Prime Mover, diesel or electric, direct coupled or indirect.

Mainshaft Speeds. Speed range 350 r.p.m. to 1200 r.p.m. dependant on product required.

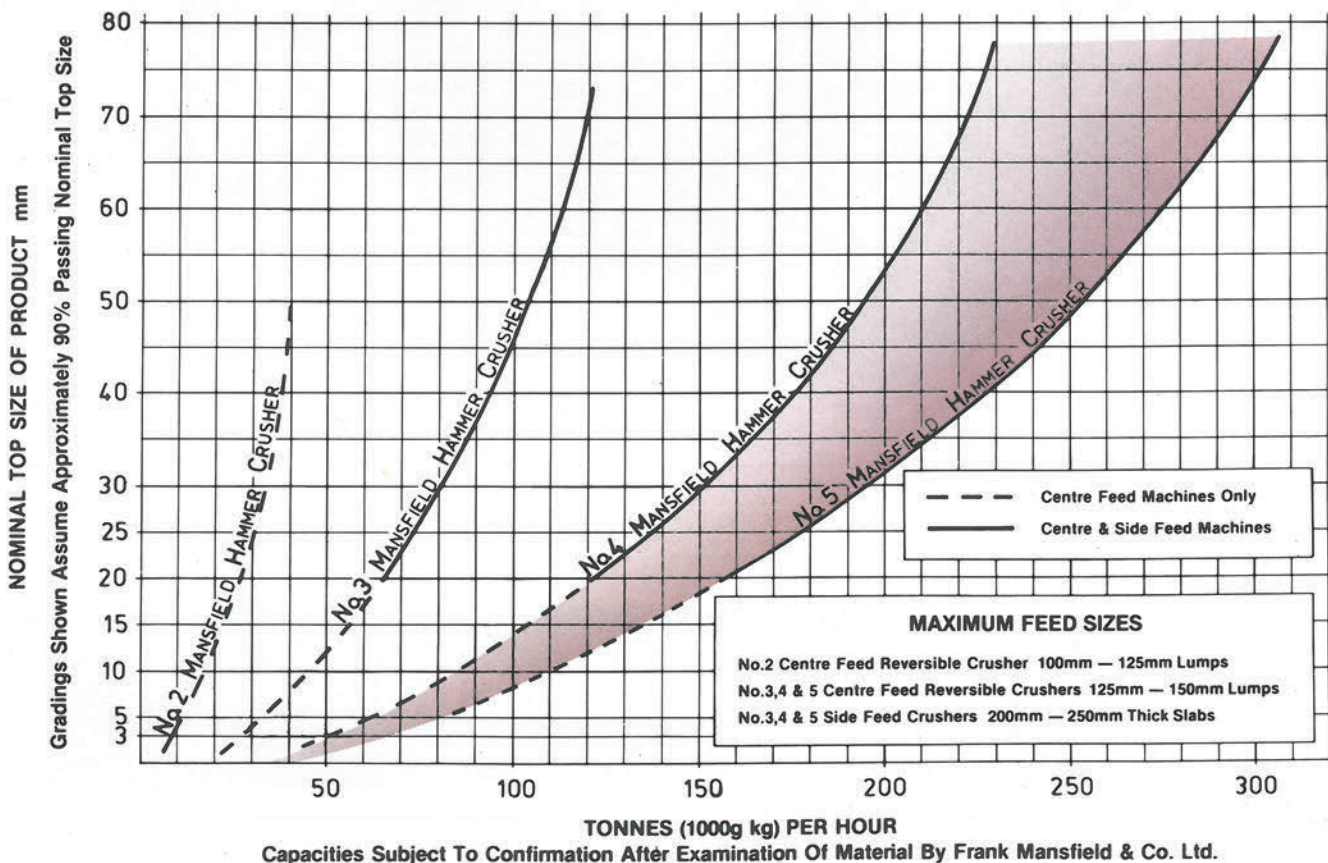
Drive. Heavy duty wedge belt drive with solid plate centre pulleys recommended.

Optional Extras:

- 1) Adaptor Boss wedge belt drive with interchangeable pulley rims.
- 2) Electrical or mechanical variable speed drives for frequent changes of product.
- 3) Solid state under speed alarm to monitor crusher speed.
- 4) Solid state auto feed load control.
- 5) Heavy duty feed and discharge chutes.
- 6) Supporting structures, mobile or static.

- Front cover illustrates typical No.5/CFXL Mansfield Reversible Hammer Crusher. The adaptor boss fitted is an optional extra.

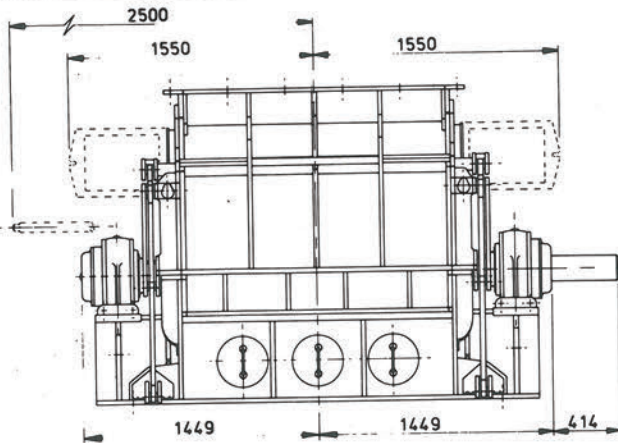
APPROXIMATE CAPACITIES WHEN CRUSHING LIMESTONE



FOUNDATION PLAN

APPROXIMATE WEIGHT 14 TONNES DEPENDING ON SETTING USED

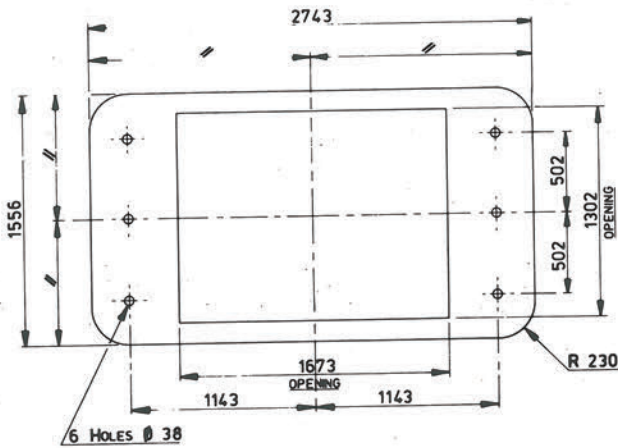
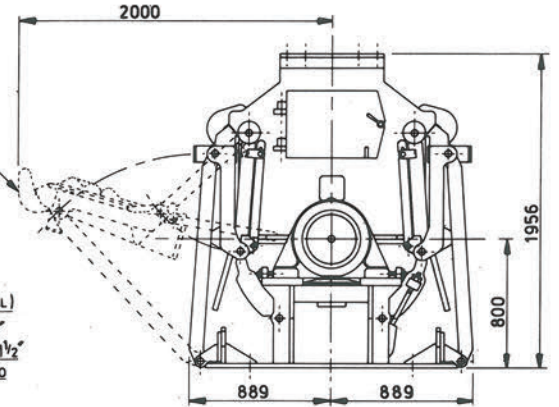
HAMMER SHAFT REMOVAL CLEARANCE



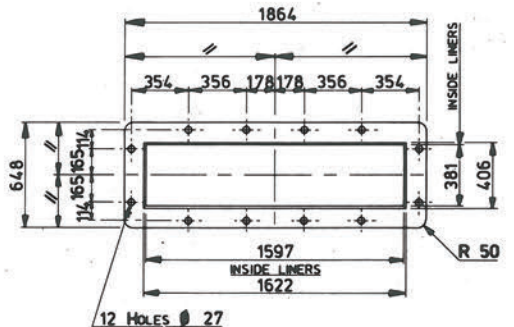
CLEARANCE TO MANUALLY OPEN THE END PLATES FOR MAINTENANCE ACCESS

SHAFT DETAILS (IMPERIAL)

DIAMETER 6.000 - 6.001
KEYWAYED TO SUIT AN 1 1/2" WIDE RECTANGULAR KEY TO B.S. 46-1-1929

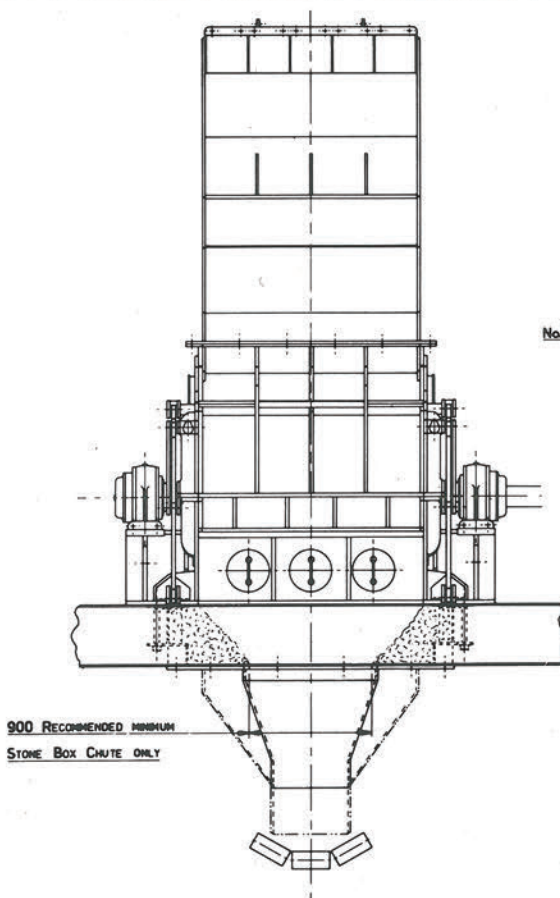


PLAN ON BASE

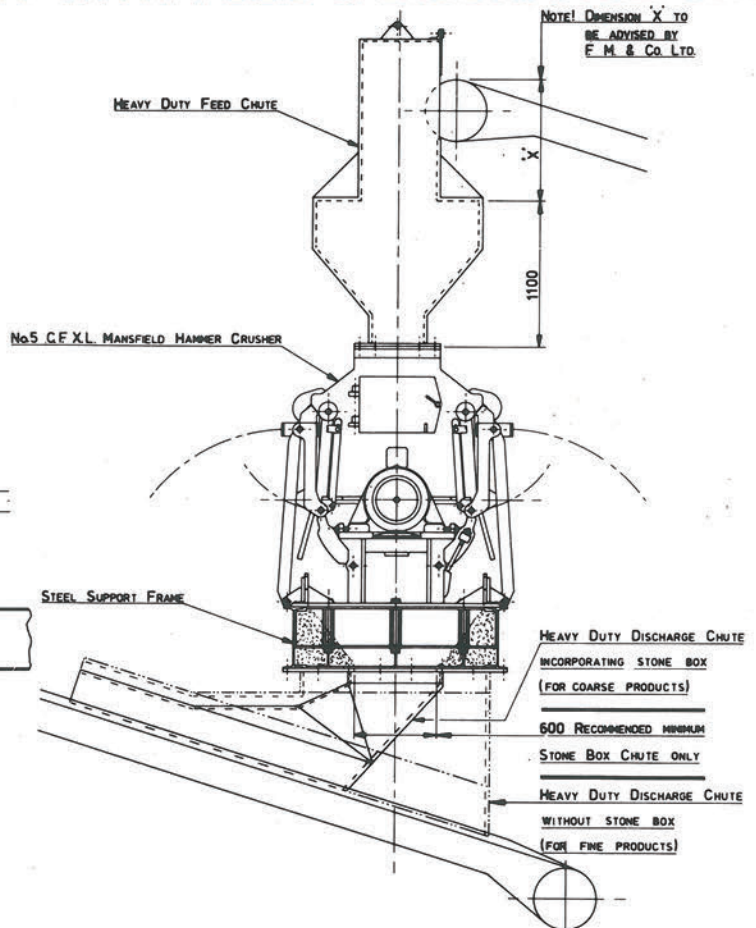


HOPPER FLANGE DETAIL

TYPICAL ARRANGEMENT WITH FEED & DISCHARGE CHUTES



900 RECOMMENDED MINIMUM
STONE BOX CHUTE ONLY



NOTE! DIMENSION X TO BE ADVISED BY F.M. & Co. LTD.

HEAVY DUTY FEED CHUTE

No.5 C.F.X.L. MANSFIELD HAMMER CRUSHER

STEEL SUPPORT FRAME

HEAVY DUTY DISCHARGE CHUTE
INCORPORATING STONE BOX
(FOR COARSE PRODUCTS)

600 RECOMMENDED MINIMUM
STONE BOX CHUTE ONLY

HEAVY DUTY DISCHARGE CHUTE
WITHOUT STONE BOX
(FOR FINE PRODUCTS)