

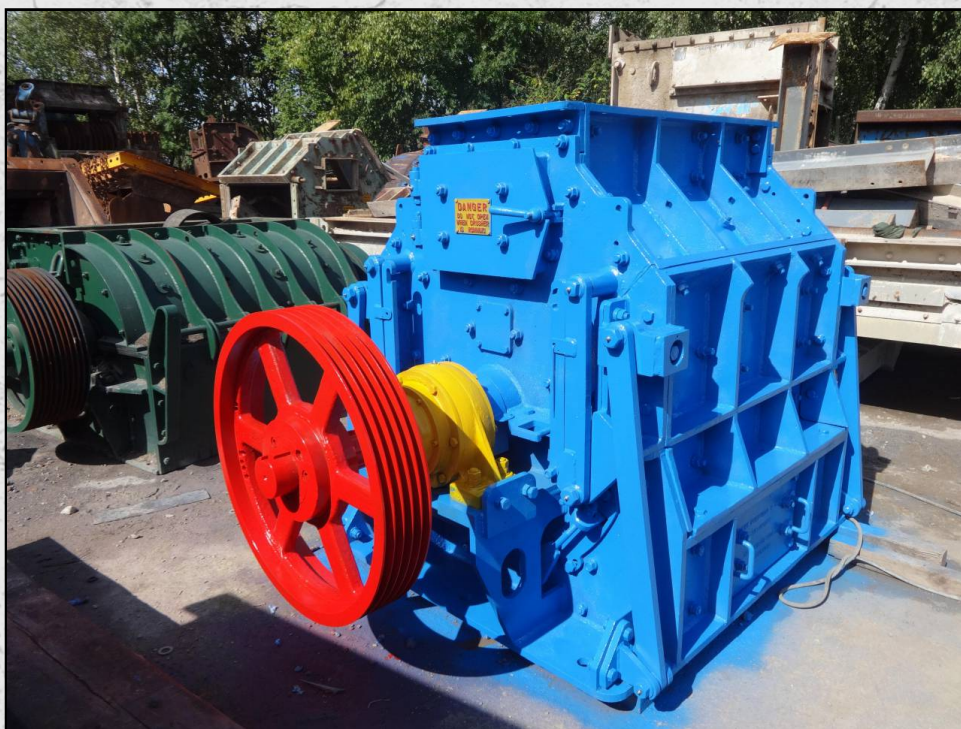


INTERNATIONAL CRUSHER SOLUTIONS

www.internationalcrushersolutions.com

Specialists in new and used Quarry Plant

MANSFIELD NO 3 CFXL



TECHNICAL INFORMATION

MANUFACTURER: MANSFIELD

MODEL: NO 3 CFXL

CATEGORY: HAMMERMILL

MOVEMENT TYPE: STATIC

CAPACITY (TPH): 120

MAX FEED SIZE (MM): 125 - 150

POWER REQUIRED (KW): 180

RPM: 420 - 1800

WEIGHT (KG): 6,500

PRICE (GBP): £ POA

DESCRIPTION

**MANSFIELD NO3 CENTRE FEED HAMMERMILL
MANUFACTURED IN THE U.K.**

**RECENTLY REFURBISHED WITH NEW WEAR
PARTS WHERE REQUIRED.**

WORLD WIDE DELIVERY AVAILABLE.

**CAN BE SUPPLIED WITH MOTOR AND DRIVES
ALONG WITH MOBILE AND STATIC
STRUCTURES AS AN OPTIONAL EXTRA.**

Tel: +44 (0)1352 732284 Fax: +44 (0)1352 734633

24 Castle Park Industrial Estate, Flint, Flintshire, UK, CH6 5XA

Email: enquiries@instcrush.com Web: www.internationalcrushersolutions.com



INTERNATIONAL CRUSHER SOLUTIONS

www.internationalcrushersolutions.com

Specialists in new and used Quarry Plant



Tel: +44 (0)1352 732284 Fax: +44 (0)1352 734633

24 Castle Park Industrial Estate, Flint, Flintshire, UK, CH6 5XA

Email: enquiries@instcrush.com Web: www.internationalcrushersolutions.com