



INTERNATIONAL CRUSHER SOLUTIONS

www.internationalcrushersolutions.com

Specialists in new and used Quarry Plant

KUE KEN 71 ROCKEATER



TECHNICAL INFORMATION

MANUFACTURER: KUE KEN
MODEL: 71 ROCKEATER
CATEGORY: JAW CRUSHER
MOVEMENT TYPE: STATIC
CAPACITY (TPH): 27 - 49
PRODUCT SIZE (MM): 19 - 45
MAX FEED SIZE (MM): 125
POWER REQUIRED (KW): 37
RPM: 350

PRICE (GBP): £ POA

DESCRIPTION

KUE KEN 71 DOUBLE TOGGLE JAW CRUSHER.

**FULLY REFURBISHED WITH NEW WEAR PARTS
WHERE REQUIRED.**

19 MM JAW SETTING 27 TO 31 TPH
25 MM JAW SETTING 31 TO 36 TPH
31 MM JAW SETTING 36 TO 40 TPH
38 MM JAW SETTING 40 TO 45 TPH
45 MM JAW SETTING 45 TO 49 TPH

**CAN BE SUPPLIED WITH MOTORS AND DRIVES
AS AN OPTIONAL EXTRA.**

WORLD WIDE DELIVERY AVAILABLE.

Tel: +44 (0)1352 732284 Fax: +44 (0)1352 734633

24 Castle Park Industrial Estate, Flint, Flintshire, UK, CH6 5XA

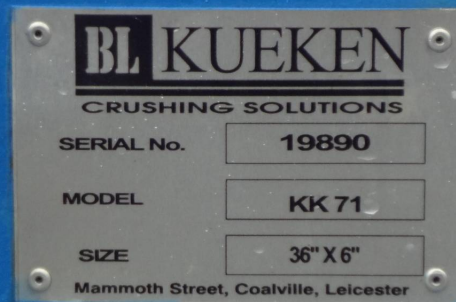
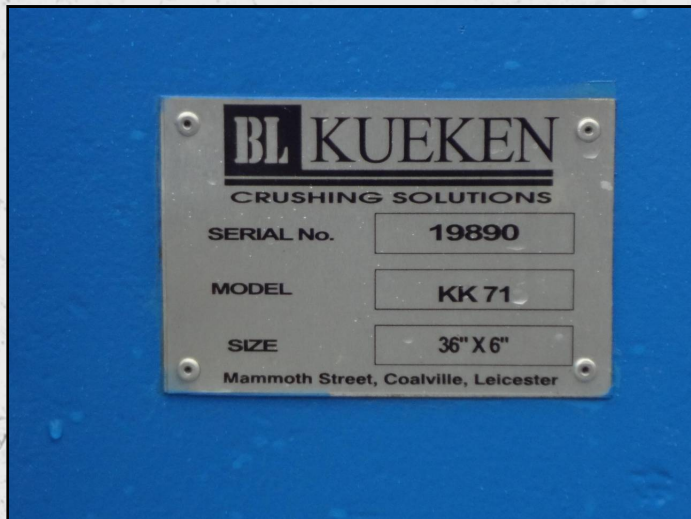
Email: enquiries@instcrush.com Web: www.internationalcrushersolutions.com



INTERNATIONAL CRUSHER SOLUTIONS

www.internationalcrushersolutions.com

Specialists in new and used Quarry Plant



Tel: +44 (0)1352 732284 Fax: +44 (0)1352 734633

24 Castle Park Industrial Estate, Flint, Flintshire, UK, CH6 5XA

Email: enquiries@instcrush.com Web: www.internationalcrushersolutions.com