



INTERNATIONAL CRUSHER SOLUTIONS

www.internationalcrushersolutions.com

Specialists in new and used Quarry Plant

BAXTER 900 X 300



TECHNICAL INFORMATION

MANUFACTURER: BAXTER
MODEL: 900 X 300
CATEGORY: JAW CRUSHER
MOVEMENT TYPE: STATIC
CAPACITY (TPH): 20 - 70
PRODUCT SIZE (MM): 25 - 75
MAX FEED SIZE (MM): 280
POWER REQUIRED (KW): 45
RPM: 320
WEIGHT (KG): 7,990
PRICE (GBP): £ POA

DESCRIPTION

BAXTER S.T. 900300 900 X 300 SINGLE TOGGLE JAW CRUSHER MANUFACTURED IN THE U.K.

REFURBISHED WITH NEW WEAR PARTS WHERE REQUIRED AND IS IN OVERALL GOOD CONDITION.

WORLD WIDE DELIVERY AVAILABLE.

CAN BE SUPPLIED WITH MOTOR AND DRIVES AS AN OPTIONAL EXTRA.

Tel: +44 (0)1352 732284 Fax: +44 (0)1352 734633

24 Castle Park Industrial Estate, Flint, Flintshire, UK, CH6 5XA

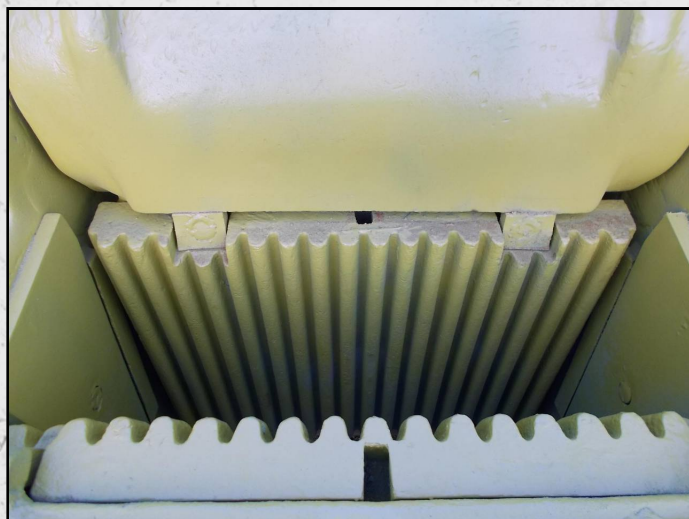
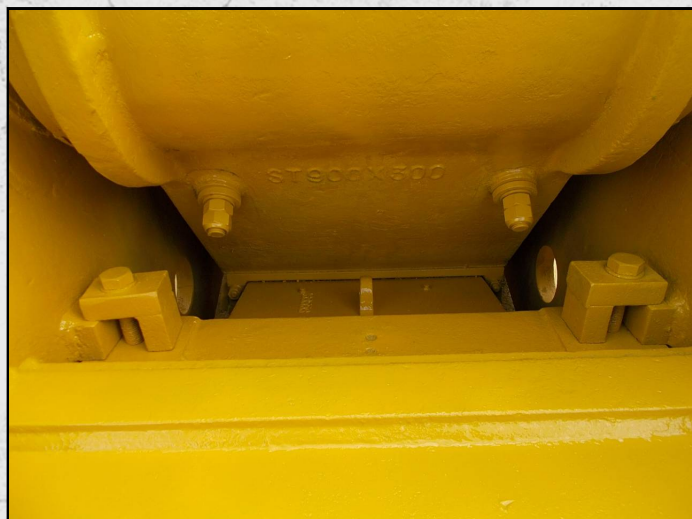
Email: enquiries@instcrush.com Web: www.internationalcrushersolutions.com



INTERNATIONAL CRUSHER SOLUTIONS

www.internationalcrushersolutions.com

Specialists in new and used Quarry Plant



Tel: +44 (0)1352 732284 Fax: +44 (0)1352 734633

24 Castle Park Industrial Estate, Flint, Flintshire, UK, CH6 5XA

Email: enquiries@instcrush.com Web: www.internationalcrushersolutions.com