

WARMAN®
Centrifugal Slurry Pumps

Excellent
Minerals
Solution



AH® Centrifugal Slurry Pump



Heavy duty pump range to perform the continuous pumping of highly abrasive/dense slurries in processes from cyclone feed to regrind, flotation and tailings in minerals plants plus other industrial applications.

Since the introduction of the first AH® pump model more than half a century ago, the comments, concerns and challenges faced by our customers and engineers have given us the opportunity to make innovative design upgrades and improvements over the years. Considering important issues including wear life, component arrangement, material composition and slurry abrasiveness, our slurry pump range continues to increase and our designs continue to evolve. Today Weir Minerals continues to offer a variety of impellers and shaft seals to ensure a perfect fit for a wide range of customer applications, and a continuing commitment to global retrofitability.

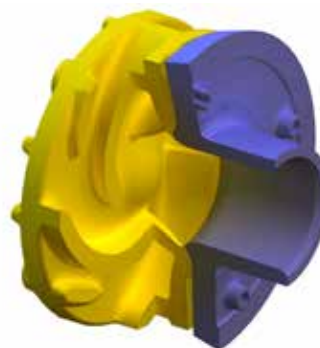
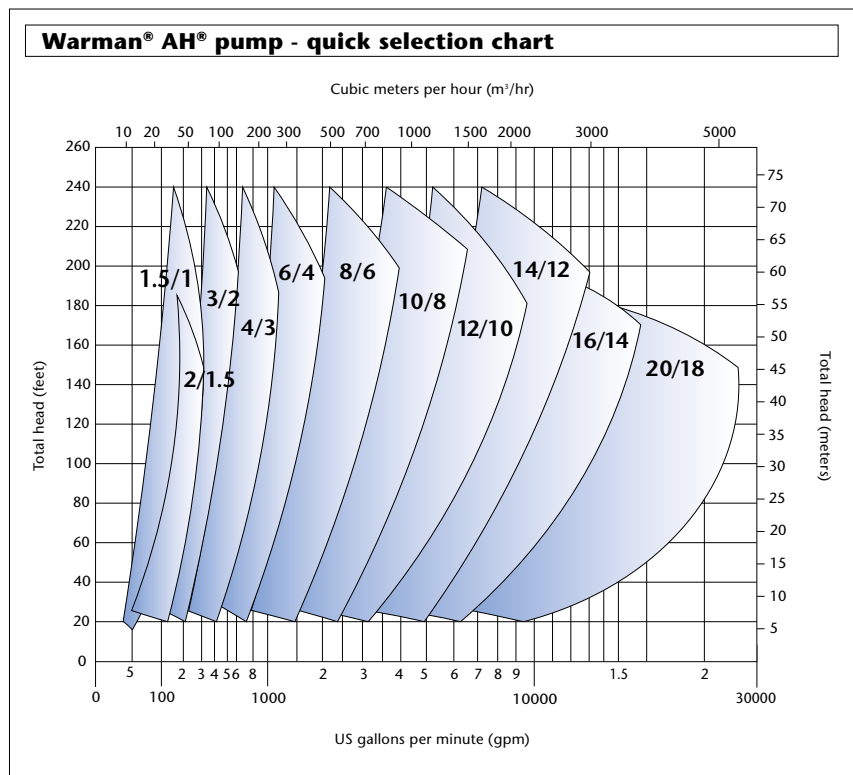
size range (discharge)
1" to 18" (25 mm to 450 mm)

capacities to
22,000 gpm (5,000 m³/hr)

heads to
240 ft (73 m)

pressures to
300 psi (2,020 kPa)

- Heavy duty construction with through-bolt design provides ease of maintenance and minimal downtime
- Ductile iron fully lined casing provides durability, strength, safety, and long service life
- Large diameter, slow turning, high efficiency impellers designed to achieve maximum wear life and low operating costs
- Large, open internal passages designed to reduce internal velocities, maximize wear life and lower operating costs
- Thick elastomer or alloy bolt-in liners provide superior corrosion resistance plus offer ease of liner change-out and interchangeability to reduce overall maintenance costs and maximize wear life
- Minimal shaft/impeller overhang reduces shaft deflection and increases packing life
- Cartridge-style bearing assembly allows for maintenance in a clean environment without removal of the pump, resulting in reliable operation and prolonged bearing life
- Grease or oil lubrication bearing assembly options offer ease of maintenance and reduced downtime
- Optional dry running shaft seal reduces or eliminates flush water requirements
- Effective expeller prolongs packing life while reducing or eliminating flush water requirement
- Now featuring the Warman® WRT® throatbush and impeller combination designed to enhance efficiency and improve wear performance
- Interchangeability of seal arrangements – full flush, low flow, centrifugal, or mechanical seals may be fitted to any sized pump

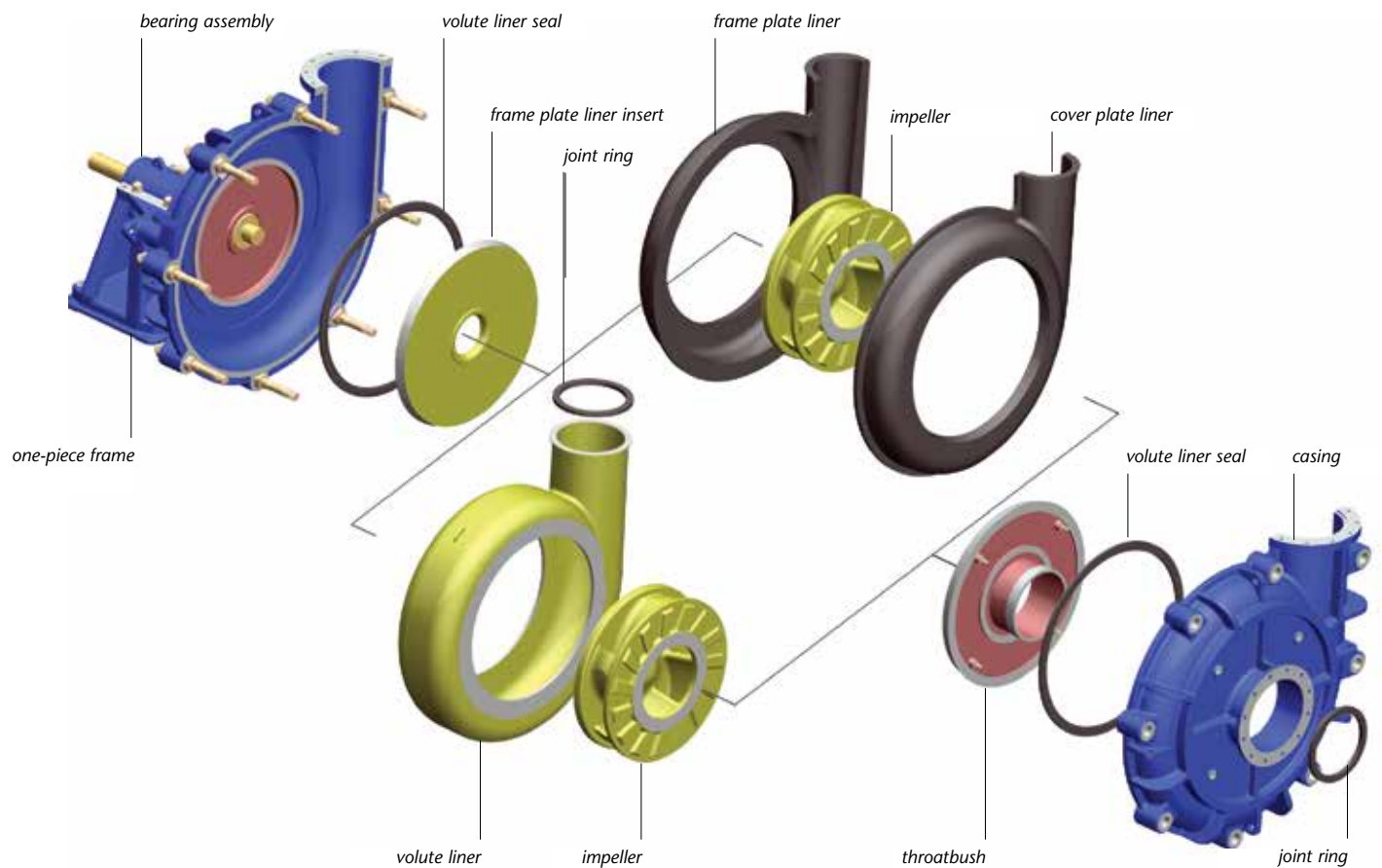


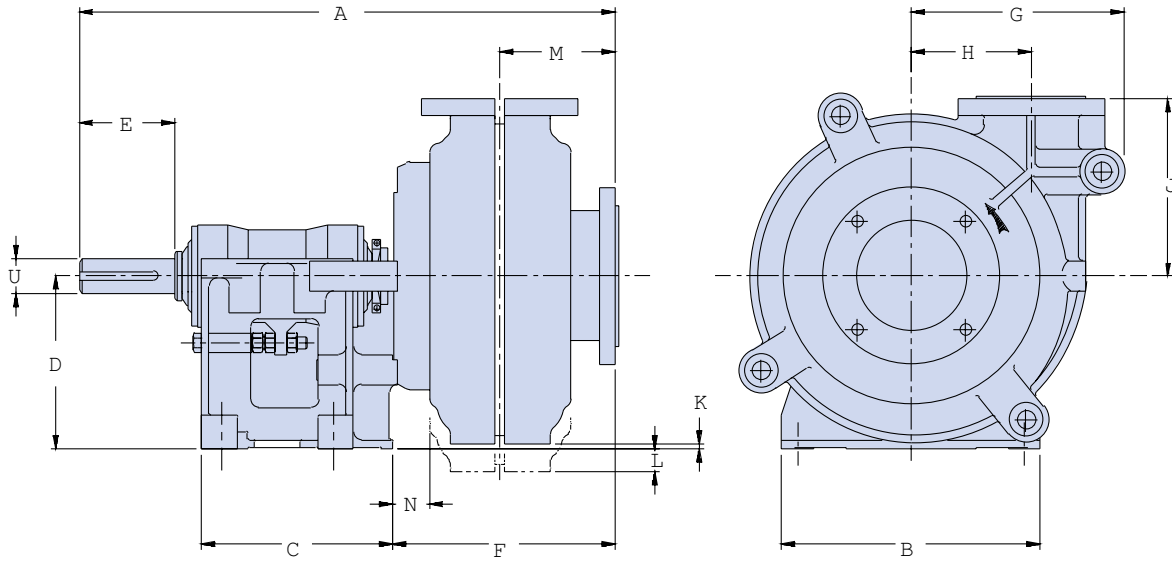
The new Warman® WRT® throatbush and impeller combination is a superior upgrade for your existing pump, and is designed to enhance efficiency and improve wear performance

The versatile, fully lined Warman® AH® pump offers a wide range of seal and liner configurations allowing the pump to be tailored to the customer's specific application.

Applications

- Ball mill discharge
- Bottom/fly ash, lime grinding
- Coal
- Coarse sand
- Coarse tailings
- Dredging
- FGD
- Fine tailings
- Flotation
- Heavy media
- Minerals concentrate
- Mineral sands
- Ni acid slurry
- Oil sands
- Phosphoric acid
- Phosphate matrix
- Process chemical
- Pulp and paper
- Rod mill discharge
- SAG mill discharge
- Wet crushers





Warman® AH® pump dimensions

Pump Size	A	B	C	D	U	Key Size	E	F	G	H	J	K	L	M	N	Wt/Lbs	
	in	in	in	in	mm	mm	in	in	in	in	in	in	in	in	in	metal	rubber
1.5/1 BAH	22.95	11.61	9.76	7.76	28	8X7	3.11	8.11	7.13	3.86	6.73	1.81	*	4.17	0.74	195	170
2/1.5 BAH	23.45	11.61	9.76	7.76	28	8X7	3.09	8.54	7.99	4.49	7.24	1.31	*	4.65	0.86	345	260
3/2 CAH	30.47	15.98	12.24	10	42	12X8	4.41	11.02	9.37	5.43	8.27	2.81	*	6.14	1.56	435	340
4/3 CAH	33.62	15.98	12.24	10	42	12X8	4.76	14.13	11.5	5.87	10.31	0.79	*	7.56	2.83	550	520
4/3 DAH	37.6	19.37	14.33	12.99	65	18X11	6.46	13.62	11.5	5.87	10.31	3.93	*	7.56	2.83	700	640
6/4 DAH	40.2	19.37	14.33	12.99	65	18X11	6.46	16.69	15.98	9.02	13.31	0.43	*	8.62	2.57	1475	1000
6/4 EAH	46.73	24.49	17.64	17.99	80	22X14	8.74	17.05	15.98	9.02	13.31	5.43	*	8.98	2.96	1950	1400
6/4 EEAHP	48.82	24.49	17.64	17.99	85	22X14	8.74	19.02	17.13	9.02	18.11	1.93	*	9.06	4.02	2800	*
8/6 EAH	51.3	24.49	17.64	17.99	80	22X14	8.74	21.93	21.69	12.52	18.11	*	2.44	11.5	3.23	3300	2166
8/6 FFAHPP	61.77	33.74	25	24.02	120	32X18	9.25	23.23	24.21	12.52	24.12	2.28	*	11.97	6.14	6424	5467
8/6 FAH	59.7	33.74	25	24.02	100	28X16	10.98	21.22	21.69	12.52	18.11	3.54	*	11.97	2.56	4000	3066
10/8 FAH	64.8	39.02	27.76	24.02	100	28X16	10.98	26.89	26.5	16.5	25	*	0.47	13.11	5.28	7040	5690
10/8TAHPP	84.09	45.28	40.94	25.59	150	36X20	13.78	27.28	29.92	16.5	28.94	*	2.76	13.15	4.13	6500	5480
10/8 STAHP	69.09	45.28	30.71	25.59	120	32X18	9.29	27.28	29.92	16.5	28.94	*	2.72	13.15	4.13	5050	4580
10/8 STAH	68.98	45.28	30.71	25.59	120	32X18	11.02	27.24	26.5	16.5	25	1.06	*	13.15	5.63	8250	6900
12/10 FAH	67.76	39.02	27.76	24.02	100	28X16	10.98	29.65	29.76	18.27	26.5	*	4.09	15	4.25	8290	6190
12/10 TAHPP	86.22	45.28	40.94	25.59	150	28X16	13.78	30.2	23.23	18.27	31.5	*	5.12	15.04	7.6	15908	13492
12/10 TAHP	86.06	45.28	40.94	25.59	150	36X20	14.07	30.2	30.08	18.27	31.5	*	4.7	15.04	4.45	18624	16234
12/10 TAH	86.77	45.28	40.94	25.59	150	36X20	13.78	30	29.5	18.27	26.5	*	2.52	15	5.88	11519	9410
12/10 STAH	71.5	45.28	30.71	25.59	120	32X18	11.02	30	29.72	18.27	26.5	*	2.56	15	4.6	9500	7400
14/12 FAH	69.84	39.02	27.76	24.02	100	28X16	10.98	31.61	36.89	24.76	32.76	*	10.35	15.98	4.13	12890	9090
14/12 STAH	73.74	45.28	30.71	25.59	120	32X18	11.02	31.97	36.89	24.76	32.76	*	8.82	15.98	4.48	14100	10300
16/14 TUAH	91.34	57.48	41.34	35.43	150	36X20	13.78	37.52	41.26	25.98	35	*	3.31	17.76	6.56	22000	*
20/18 TUAH	97.44	57.48	41.34	35.43	150	36X20	13.78	44.29	55.67	37.01	48.43	*	16.42	22.84	2.98	36440	27181
20/18TUAHP	97.44	57.48	41.34	35.43	150	36X20	13.78	43.31	62.99	37.01	48.43	*	15.67	22.83	3.37	46206	37829
20/18TUAHPP	97.44	57.48	41.34	35.43	150	36X20	13.78	43.31	62.99	37.01	48.43	*	15.67	22.83	3.37	51232	40596

Note: U dimensions and key sizes are in millimeters. All others are in inches.

Weir Minerals North America

2701 S Stoughton Road, Madison WI 53716
 PO Box 7610, Madison WI 53707
 USA

Tel: 608 221 2261
 Fax: 608 221 5810
 www.weirminerals.com



Excellent
 Minerals
 Solutions

